



BRUSHING UP

Helping You Get The Most Out Of Your Dental Coverage



UNDERSTANDING YOUR DENTAL PLAN

Understanding your dental benefits is key to getting the most out of your plan, and we're here to make it easy!

In addition to knowing your annual maximum and deductible, be sure to check out what services are covered:

- **Diagnostic & Preventive:** like cleanings, X-rays and exams
- **Basic Services:** like fillings, root canals and tooth extractions
- **Major Services:** like crowns, bridges and implants

To see the details of your specific plan and how much is covered:

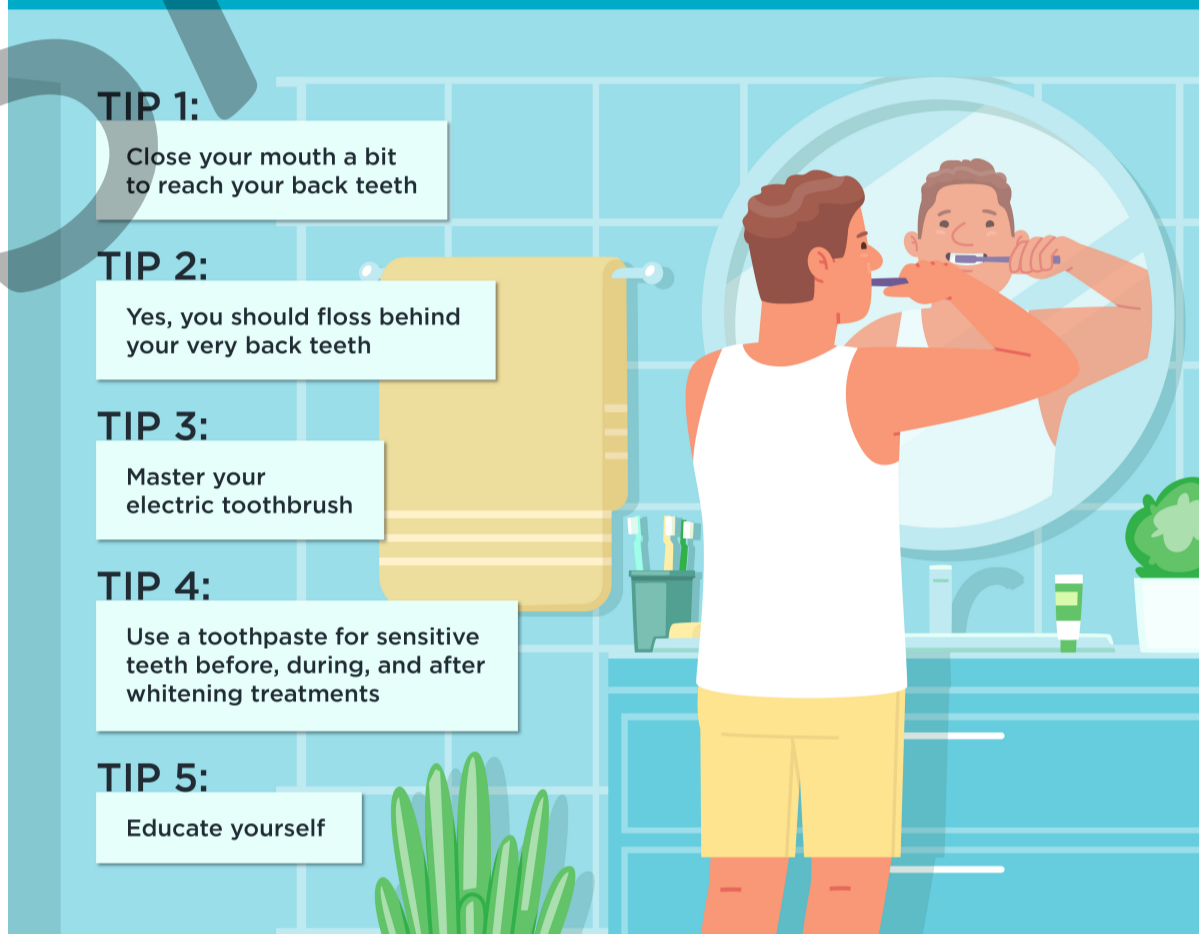
1. Sign in to your [member portal](#)
2. Select "Coverage" from the navigation bar

We're here to help every step of the way!

[Learn More](#)

BEYOND THE "BASICS" 5 MUST-KNOW ORAL HEALTH TIPS

We all know to brush twice daily with fluoride toothpaste, but here are a few more tips and tricks.



[Learn More](#)

Share YOUR Story

How has being a Delta Dental member improved your health, confidence or well-being? We want to hear YOUR story!

[Share Your Story](#)

Want tips to keep your teeth and gums healthy?

Sign up for Delta Dental's oral health newsletter, The Floss. Each month, we'll send you an email with helpful articles on dental health, yummy recipes and other resources to keep your smile sparking.

[Sign Up Today](#)

Let us know your thoughts!

We strive to send you emails that you find informative and useful. Your feedback is important, so let us know if we hit the mark. We welcome your suggestions and ideas!

*1. How useful did you find this email?

- Extremely useful
- Very useful
- Somewhat useful
- Not so useful
- Not so useful at all

[Get Feedback](#)

STAY CONNECTED

[BLOG](#)

